

**Waterside Marina, Brightlingsea
CO7 0GA
£230,000 Leasehold**

Town & Country
residential sales and lettings



**9 Osbornes Court, Victoria Place, Brightlingsea, Essex CO7 0EB 01206 302288
www.townandcountryresidential.co.uk**



- **ONE BEDROOM STYLISH APARTMENT**
- **FABULOUS VIEWS OVER THE MARINA**
- **SPACIOUS OPEN PLAN LIVING SPACE**
- **KITCHEN WITH INTEGRATED APPLIANCES**
- **LARGE BEDROOM with FITTED WARDROBES**
- **LUXURY BATHROOM**
- **PRIVATE BALCONY**
- **DOUBLE GLAZING AND GAS CENTRAL HEATING**
- **ALLOCATED PARKING SPACE**
- **CLOSE TO BEACH & TOWN CENTRE**

**** STYLISH ONE BED APARTMENT ON THE SOUGHT AFTER WATERFRONT MARINA, POINT CLEAR AND RIVER COLNE ESTURY****

This luxury second floor apartment, with French doors. External and Juliet balconies, allow a light and airy feel to the property.

The open plan lounge/diner and kitchen with integrated appliances, with its generous balcony overlooking the Marina is a fantastic living space. The large double bedroom, with built-in wardrobes, give a spacious feel.

A luxury bathroom, gas central heating, double glazing and underground parking complete this property.

Located just a stones throw from the beach and within walking distance to the Town Centre, this location could not be more perfect for relaxed living.

**** A MUST SEE APARTMENT ****



The accommodation with approximate room sizes are as follows:

ENTRANCE HALL

Wooden entrance door, laminate flooring, inset spot lights, radiator, storage/boiler cupboard.

KITCHEN

9' 5" x 7' 8" (2.87m x 2.34m)

Laminate flooring, inset spot lights. Range of wall and base units with worktop over, integrated fridge/freezer, dishwasher, washing machine, electric oven with gas hob and extractor over, 1½ bowl stainless steel sink/drainer with waste disposal unit.

LOUNGE/DINER

16' 8" x 15' 7" (5.08m x 4.75m)

French doors to private balcony overlooking the Marina, laminate flooring, inset spot lights, three radiators.

BEDROOM

17' 11" x 9' 9" (5.46m x 2.97m)

Juliet balcony overlooking the Marina, carpet flooring, inset spot lights, radiator, double fitted wardrobes.

BATHROOM

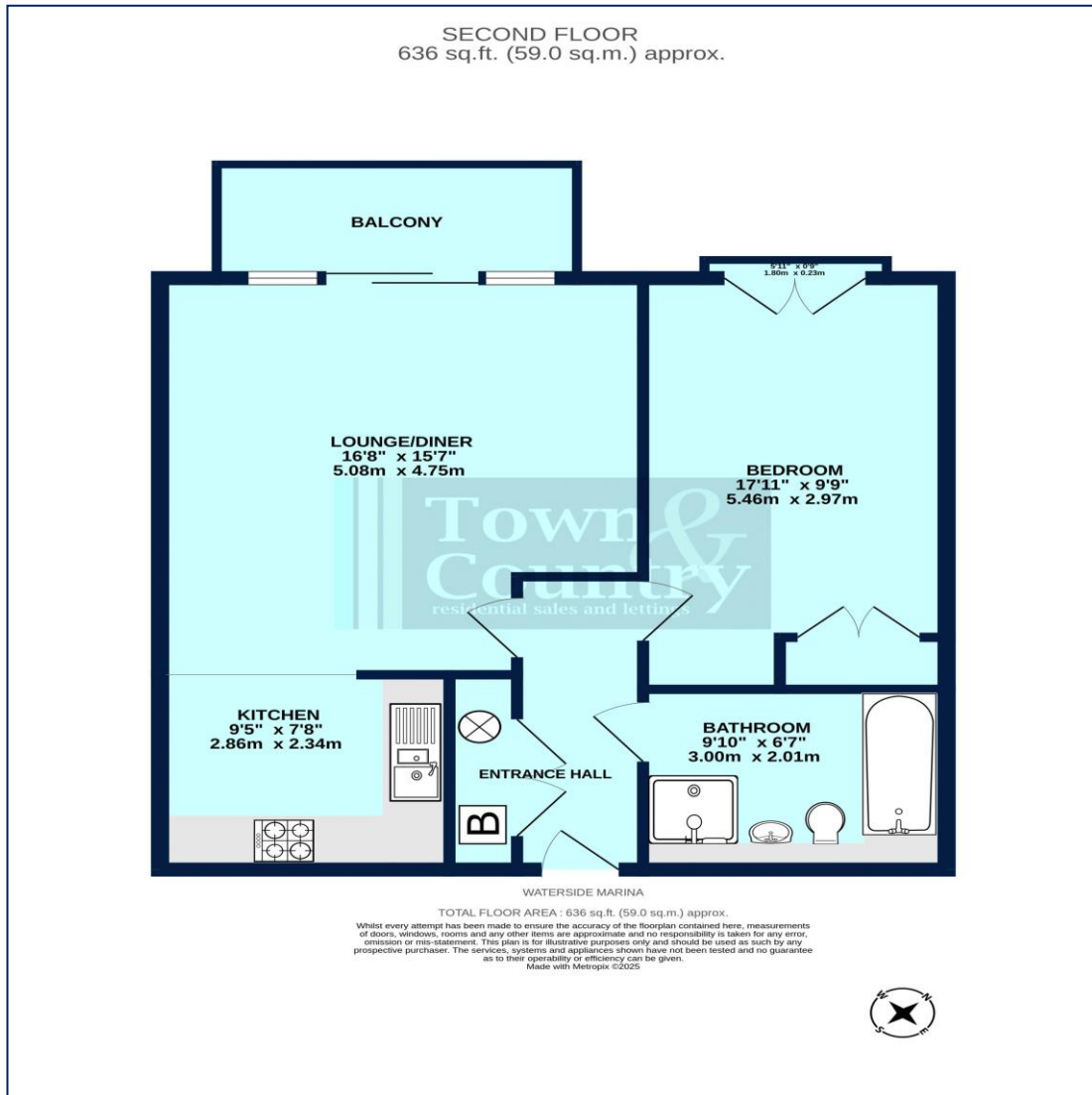
9' 10" x 6' 7" (2.99m x 2.01m)

Tiled flooring, inset spot lights extractor fan, heated towel rail. Pedestal wash hand basin with large mirrored storage cupboard over, wall mounted WC, panelled bath with mixer taps and shower connection, separate shower enclosure, fully tiled walls.

EXTERIOR

Intercom security entrance, private underground allocated parking space.





Score	Energy rating	Current	Potential
92+	A		
81-91	B		
69-80	C	78 C	79 C
55-68	D		
39-54	E		
21-38	F		
1-20	G		

Property Misdescription Act 1991: The Agent has not tested any apparatus, equipment, fixture, fittings or services and does not verify they are in working order, fit for their purpose, or within ownership of the sellers, or within the lessors interest therefore the buyer or ingoing tenant must assume the information given is incorrect. All sizes are approx. and should not be relied on. Buyers/ tenants should satisfy themselves of dimensions when ordering inward fixtures and fittings. Neither has the agent checked the legal documentation to verify legal status of the property, or any neighbourhood planning that is pending, current or proposed for the future. A buyer or ingoing tenant must assume the information is incorrect until it has been verified by their own solicitors. Nothing concerning the type of construction, condition of the structure or its surroundings is to be implied from the photograph, artist's